

# Regulating the Supply of Recycled Water Getting the Balance Right

## **Ian McNab**

Project Manager, Recycled Water

Department of Environment and Resource Management

## **Jim Fewings**

Director, Healthy Waters Policy

Department of Environment and Resource Management

16 March 2011

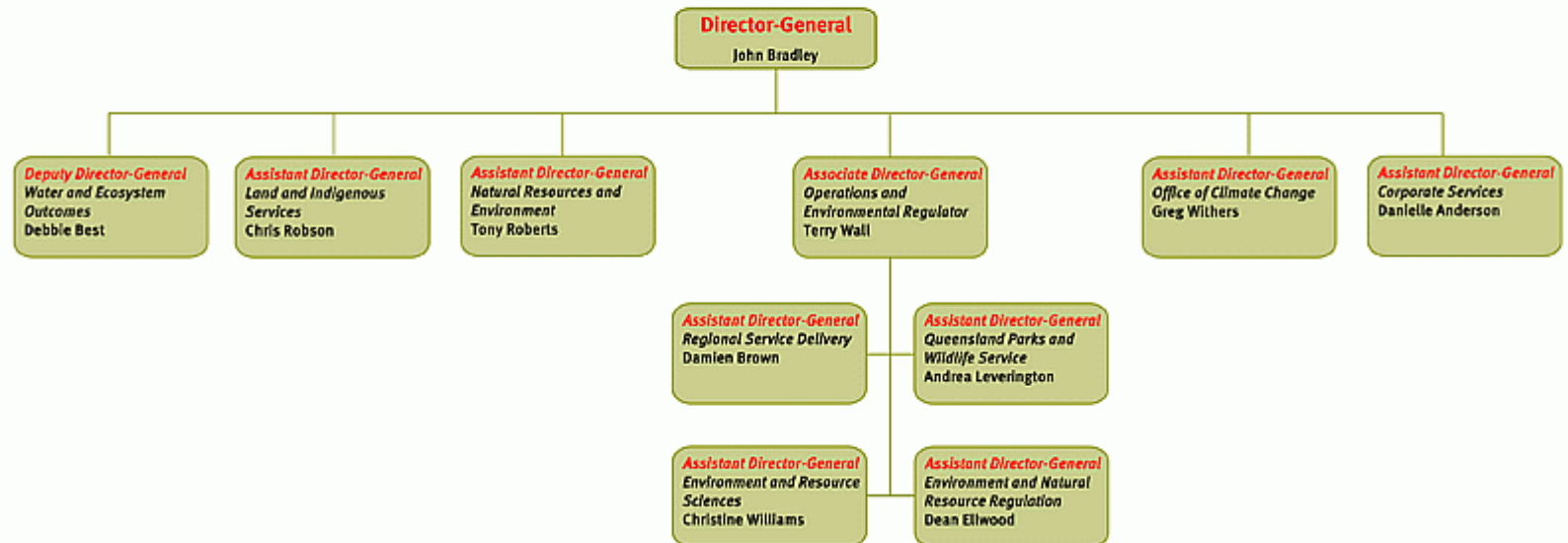


# Topics

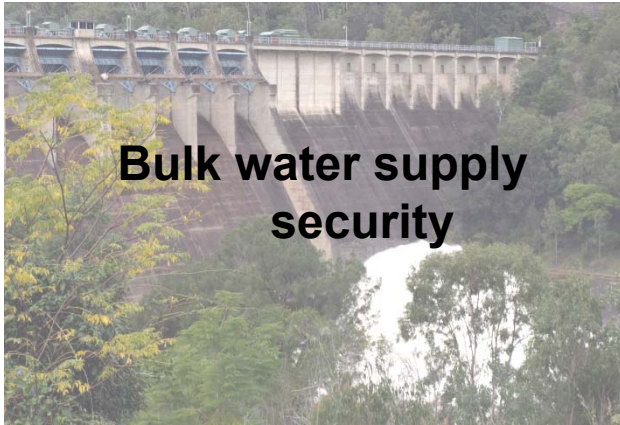
- **Why we recycle water**
- **How recycled water is regulated in Queensland**
- **Government policies around recycled water**
- **Total Water Cycle Management Plans**

## Departmental structure

## Organisational Chart



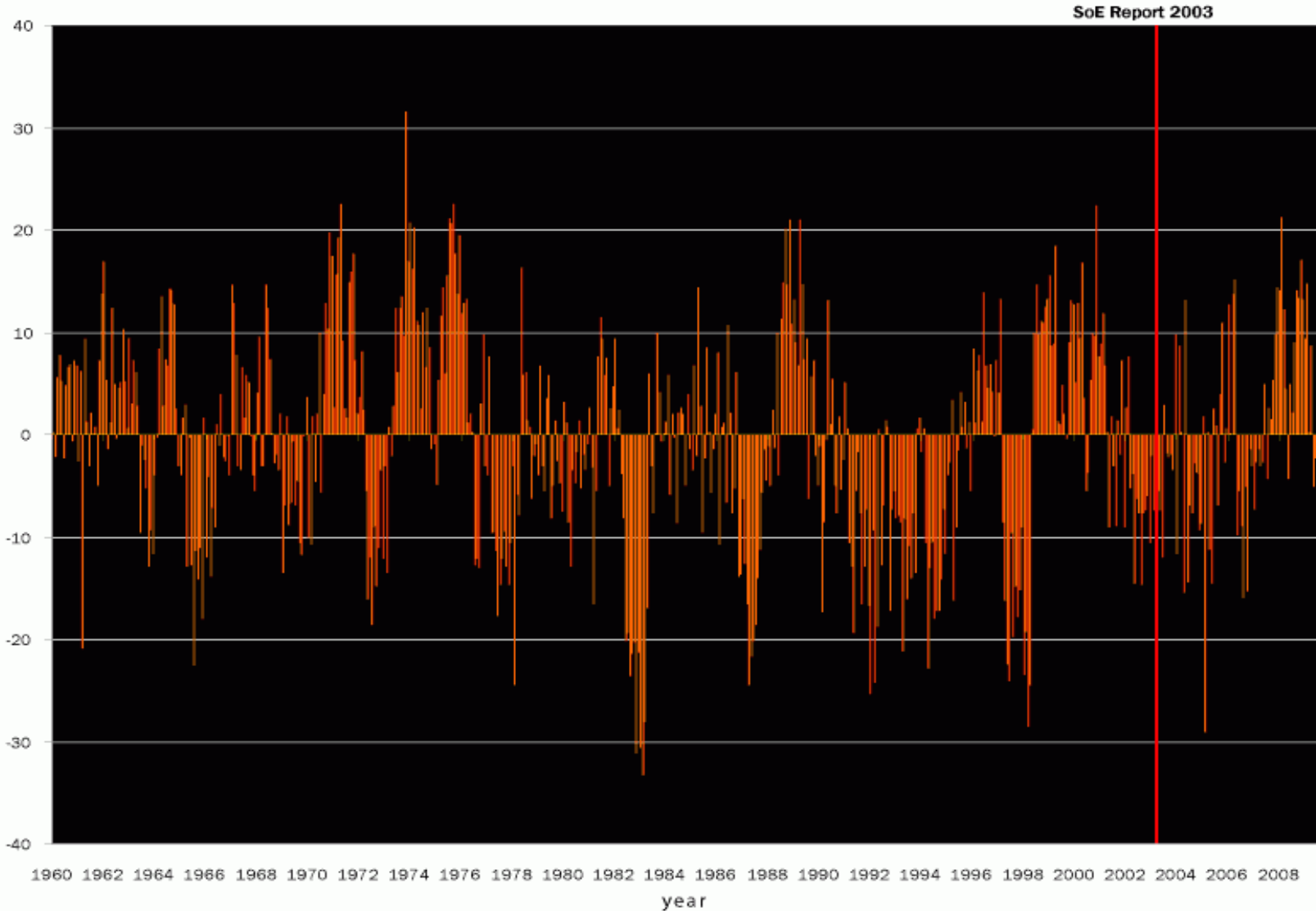
# Urban Water Outcomes



# Why we recycle water



# Southern Oscillation Index Graph: 1960 - 2006





# How we regulate recycled water

## Background

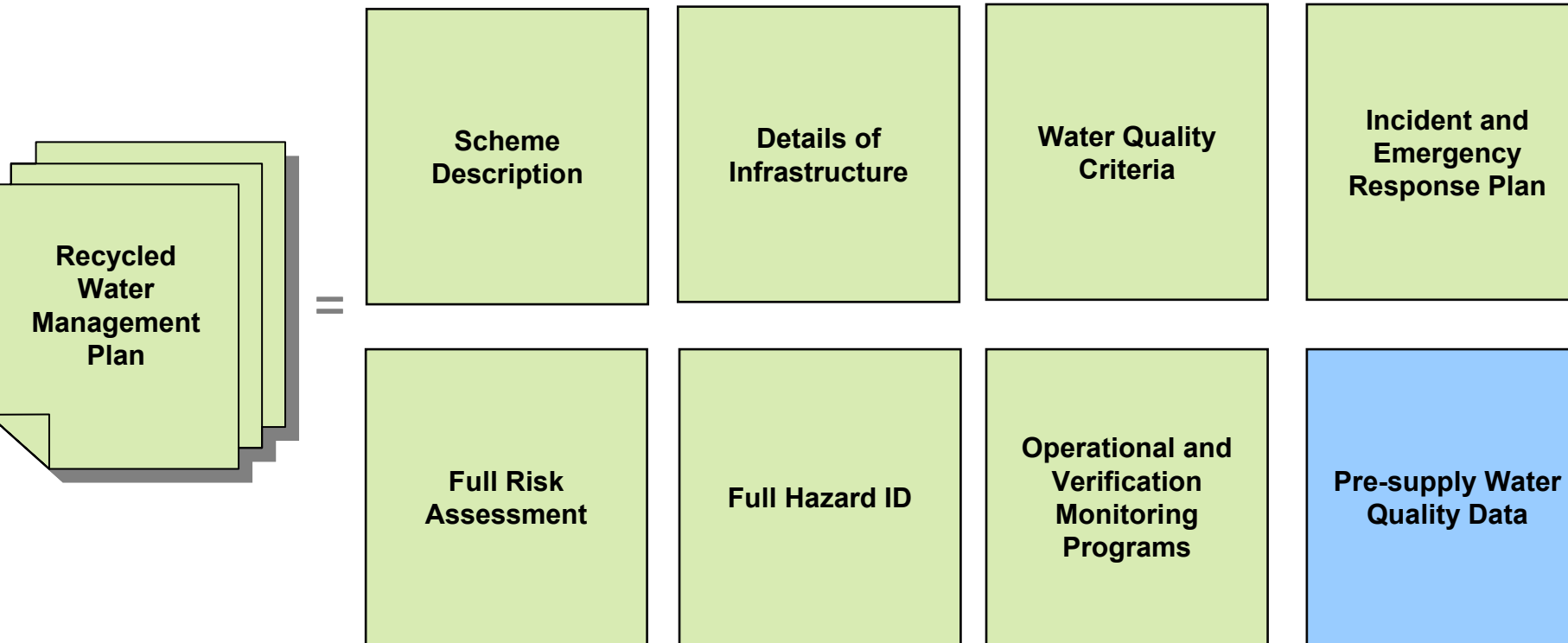
- *Public Health Act 2005, Environmental Protection Act 1994, and Workplace Health and Safety Act 1995* all deal with incidents after they occur
- Recycled water provisions of the *Water Supply (Safety and Reliability) Act 2008* commenced in July 2008

# How we regulate recycled water

## The Water Supply (Safety and Reliability) Act

- Purpose is to protect public health (and continuity of operation)
- Recycled water
  - Sewage or effluent
  - Wastewater
  - CSG water
- Who is captured
- Requirements

# Recycled Water Management Plans



# Exemption from having an approved RWMP

- May be granted by the regulator
- Lasts for 5 years
- Certain schemes cannot apply for an exemption

# CSG Recycled Water

- The Act has been amended to include the regulation of CSG recycled water where it impacts on town drinking water supplies
  - Direct Augmentation (DWQMP)
  - Indirect Augmentation (surface water and ground water)
- The regulation of CSG water disposal or use will continue under the *Environmental Protection Act 1994*

# CSG Recycled Water

- The regulation of CSG water will apply when CSG recycled water is:
  - released into a water source e.g. watercourse, lake, dam weir or aquifer  
**(indirect augmentation)**
  - supplied directly to a town as a source of drinking water supply  
**(direct augmentation)**
- Adaptive approval regime for indirect augmentation

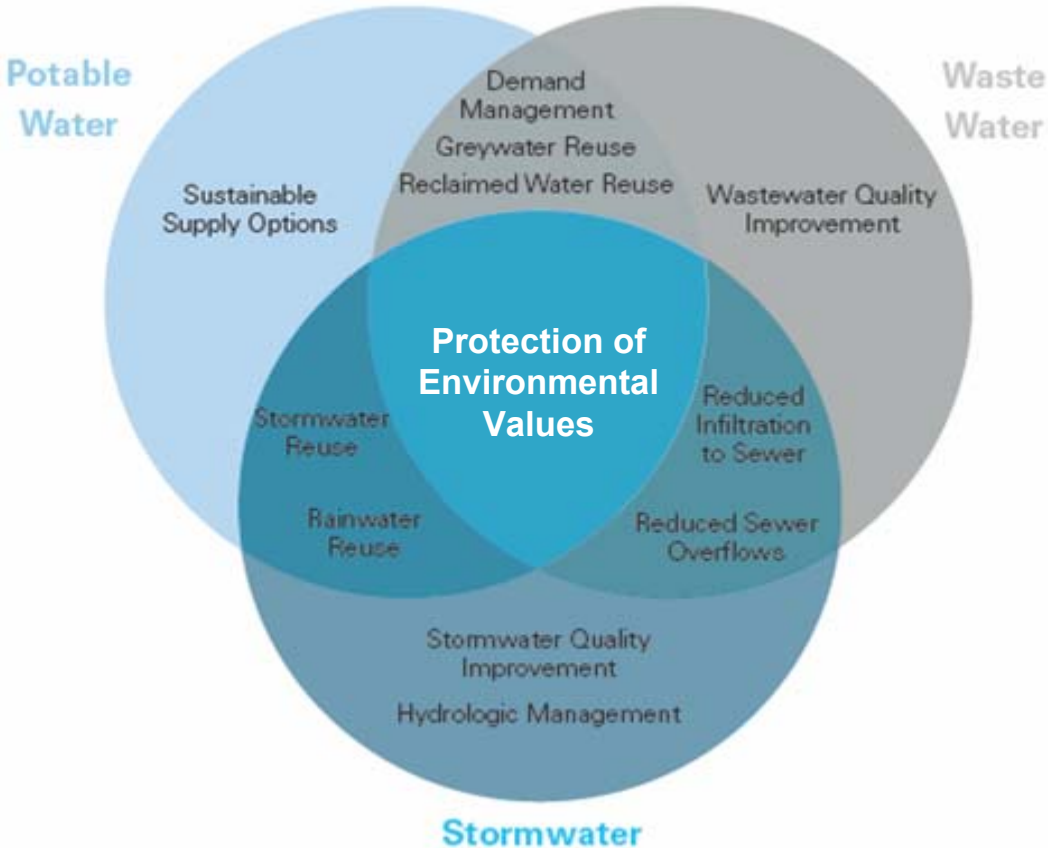
# Recycled water provider obligations

Requirement	Exemptions	Apply to a RWMP
Notification of water quality incident	Yes	Yes
Annual report	Yes	Yes
Internal audit	No	Yes
Regular Audit (3 <sup>rd</sup> party)	No	Yes
Spot audit	No	Yes
Public reporting	No	Yes (for certain schemes)

## Other policies around water recycling

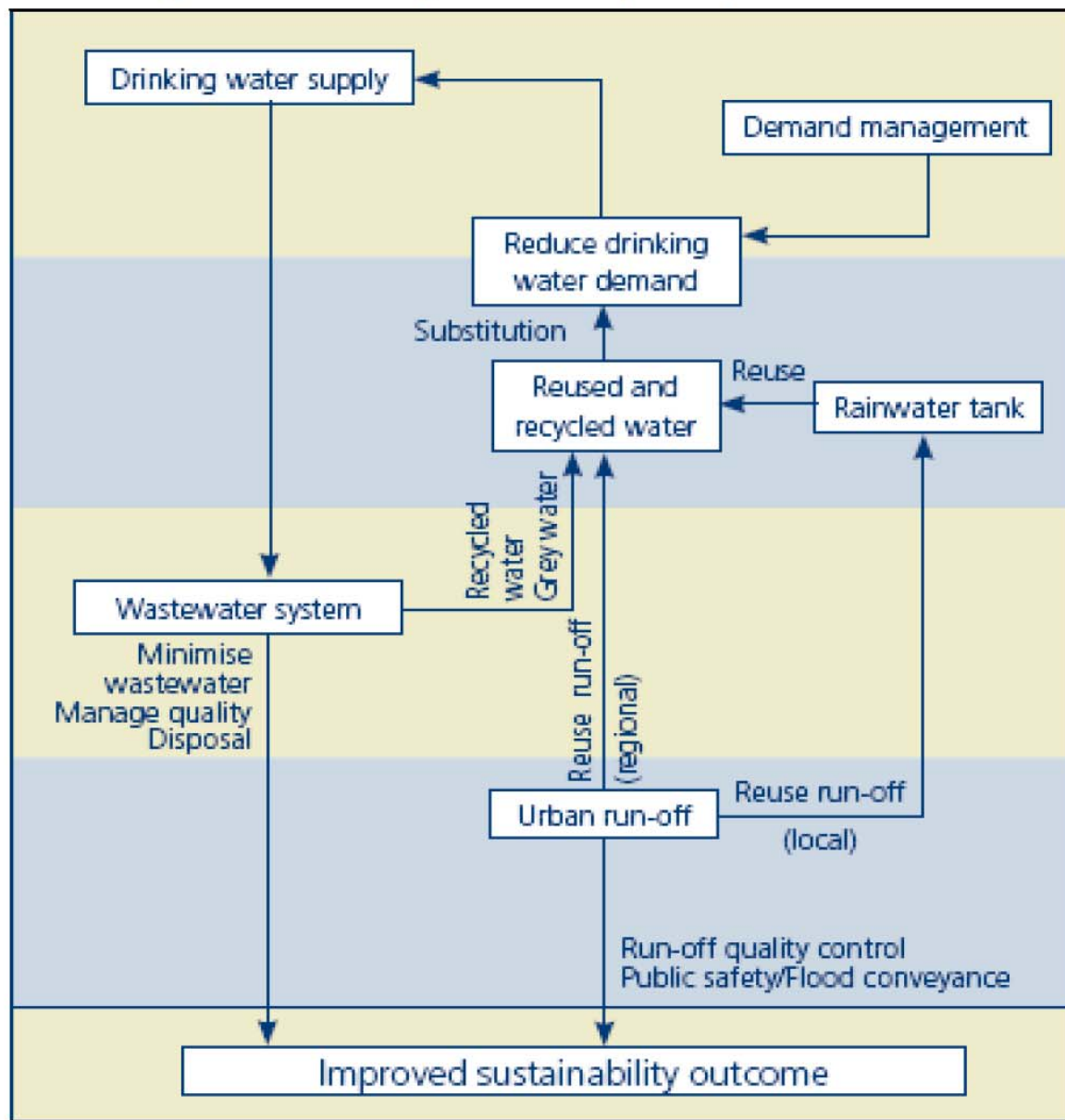
- Waterwise
- Water Sensitive Urban Design
- Resource Operating Plans
- Regional water supply strategies
- Total water cycle management

# Total Water Cycle Management



# Total water cycle management

© Victoria Department of Planning and Community Development



## Drinking water supply

LG / Bulk water entity, DERM/QWC QDC

## Reused and recycled water

LG DERM/QWC QDC

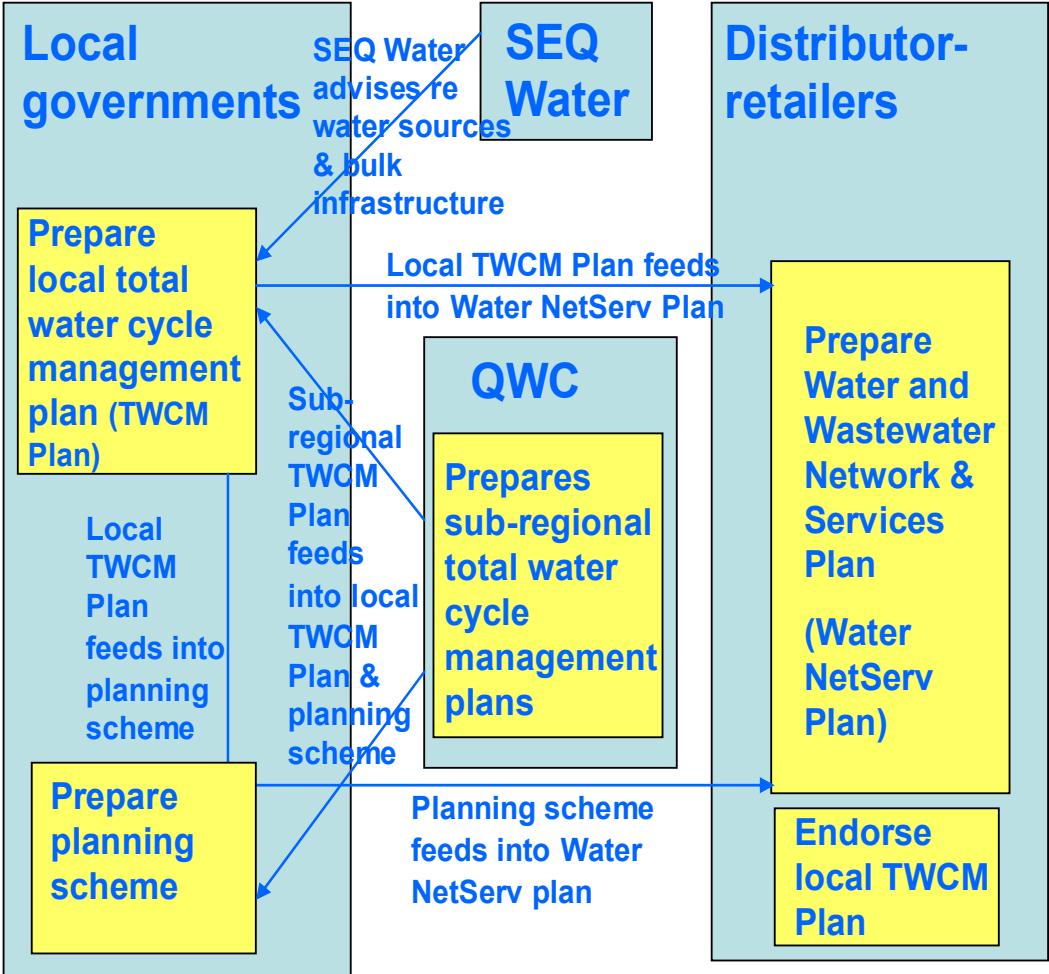
## Waste water management

LG / Water entity DERM

## Urban run-off management

LG DERM

# Relationship between Total Water Cycle Management Plans and other Plans



# Total Water Cycle Management

- LG requirements under the EPP Water—matters for inclusion, timing, certification, review
- SEQ initial focus 1 July 2012
- Guidelines, roll-out training and capacity building, decision support tools –SEQ HWP-Water –by--Design
- Links to other legislation / plans—SEQ Water.....Restructuring Act
- Subsequent focus—major regional centres and larger LGs—integration with Water Supply ....Act planning requirements for WSP
- SPP Healthy Waters—role in s/w quality and flow management

## State Planning Policy 4/10 Healthy Waters

# SPP: Healthy Waters

State Planning Policy  
under the *Sustainable  
Planning Act 2009*

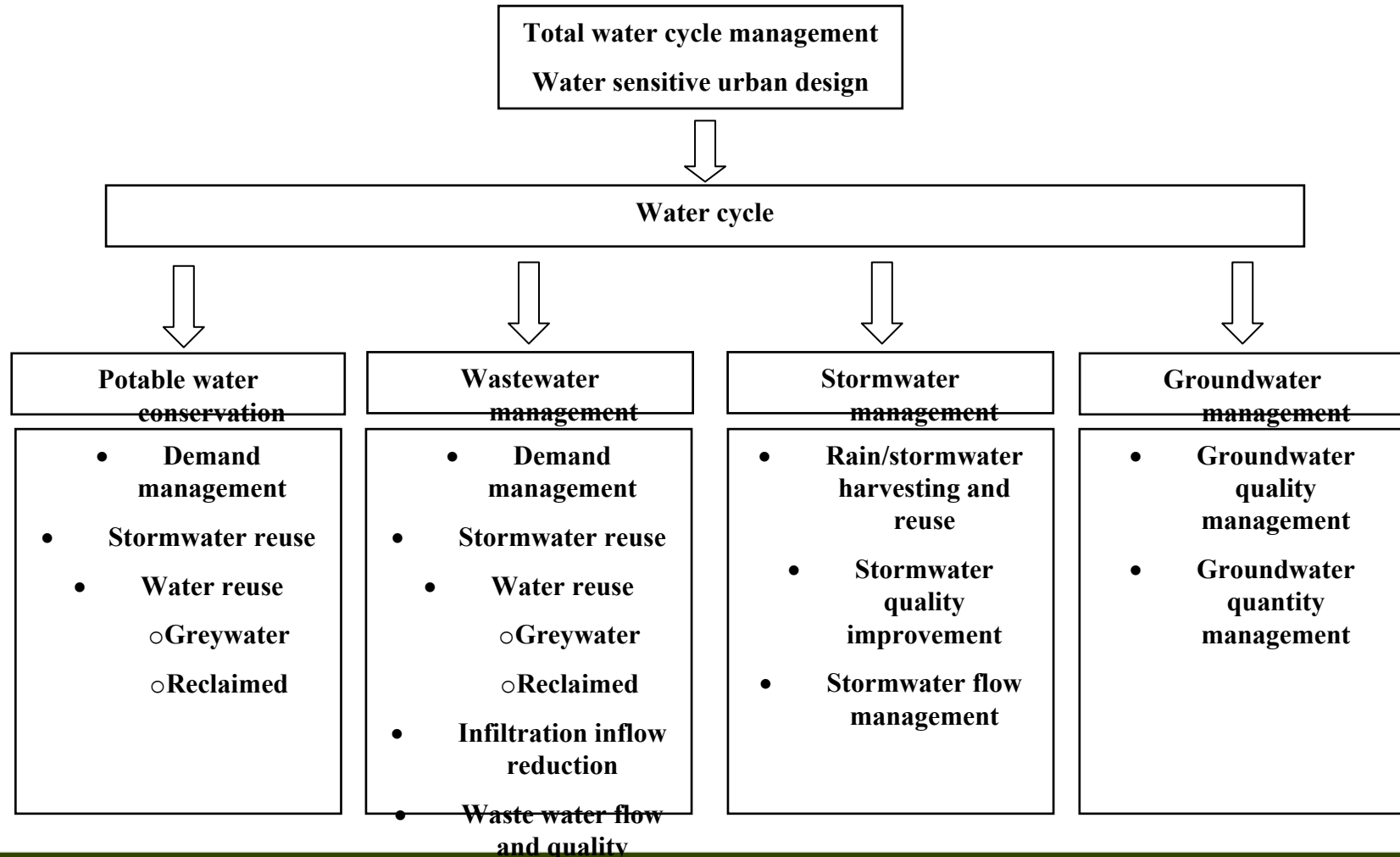
Released Oct 2010

Commences 2 May

Reviewed in 5 years

Expires in 10 years

# The SPP Healthy Waters in relation to water sensitive urban design (WSUD) and total water cycle management (TWCM)



The policy directly addresses the waste water quality and stormwater quality and flow management components of the total water cycle (in bold).

## SPP HW --outcome

- Development is **planned, designed, constructed, and operated** to manage stormwater and waste water in ways that protect the environmental values specified in the EPP Water 2009.

## Role of the SPP HW

- Make clear State's interest in land use planning for WQ.
- Guide planning instruments and development decisions to reduce impacts on water quality from urban development.
- Greater consistency throughout Queensland.
- Site WQ outcomes → WQOs in the waterway
  - Stormwater quality design objectives
  - ESC WQ outcomes

# SPP HW roll-out training

- 15 March Bne
- 17 March Gold Coast
- 22 March Toowoomba
- 24 March Caloundra
- 30 March Bundaberg
- 31 March Maryborough
- 5 April Cairns
- 6 April Townsville
- 7 April Mackay
- 13 April Rockhampton
- 15 April Bne

See DERM website for details